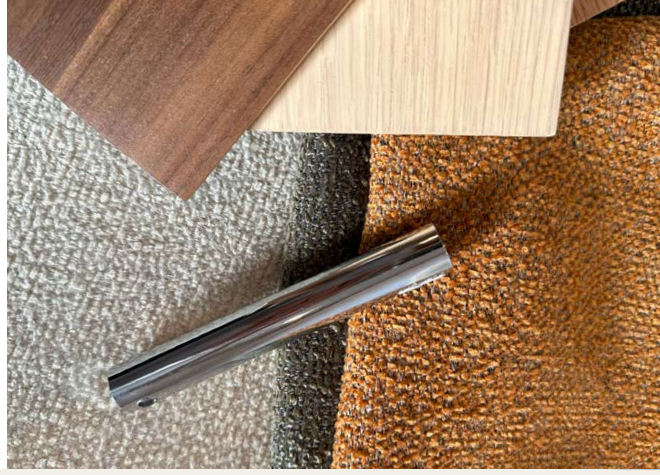


DAN  FORM
SCANDINAVIAN DESIGN • INTERNATIONAL LIVING

NEW DESIGN COLLECTION



This year, chrome's high-shine finish is reclaiming its place, adding a touch of sophistication and light reflection to our furniture design.



WE CAN'T WAIT TO SHOW YOU OUR

SPRING 2025 DESIGNS

Interior trends continue to evolve every year, shaping the way we design.

Our new collection is inspired by calming elements of nature, organic shapes and earthy, warm hues. From luxurious sculptural designs with architectural-like features, to slim and minimalist designs with clear inspiration from our Scandinavian roots.

Our Spring 2025 collection celebrates both classic shapes and intricate design features with a modern twist, that are not only beautiful but also functional and inspiring.

Whether you are transforming your home or business, we are confident that our collection offers something to make your space feel unique.



SANNE PROTIN

Designer & CEO at DAN-FORM

THIS SPRING WE INTRODUCE

Pumpkin Spice & Dark Olive

This year continues last years' trend of warm and natural tones such as beige and brown hues which add depth and cosiness to interiors, making homes feel more grounded and serene.

In addition we see shades of green being used to bring the tranquility of nature indoors. Vibrant and warm, burnt orange and rust tones are gaining popularity as statement colors. These hues add energy and personality without overwhelming the space.

Our new colours Pumpkin Spice & Dark Olive come in three exclusive textures; Bouclé, Urban fabric and Faux leather.



Pumpkin Spice
faux leather



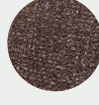
Pumpkin Spice
bouclé fabric



Pumpkin Spice
Urban fabric



Dark Olive
faux leather



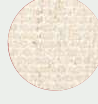
Dark Olive
bouclé fabric



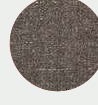
Dark Olive
Urban fabric

LAST YEAR'S BESTSELLERS - MORE POPULAR THAN EVER

The beige and brown colours from last year are an even bigger trend this year, and a musthave on our 2025 spring introductions.



Simply Beige
bouclé fabric



Major Brown
bouclé fabric



Major Brown
faux leather

AMBIT

Armchair

The AMBIT armchair embodies elegance and class. Its soft, flowing curves, created from gently bent veneer, elegantly wrap around the seat, creating comfortable armrests. The seat is upholstered with faux leather for a sleek, contemporary look.

PRODUCT DETAILS

Designer: Thomas Frederiksen

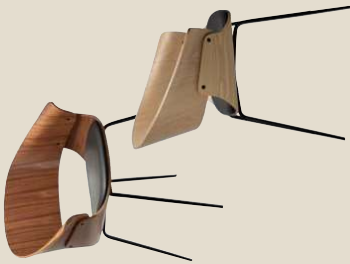
H: 79 cm

W: 64 cm

D: 57 cm

SH: 46 cm

Cbm/pcs: 0.111 m³



AOLE

Armchair

AOLE armchair encompasses a global outlook with its sculptural and organic forms. From top to bottom, it is beautifully upholstered in luxurious fabric, creating a refined aesthetic, and a high level of comfort.

PRODUCT DETAILS

Designer: Samme Profin

H: 80.5 cm

W: 52 cm

D: 58.5 cm

SH: 49.5 cm

Cbm/pcs: 0.136 m³



BOUGH

Chair

With a vision to create a light and distinctive dining chair, Jakob Amtorp has designed the BOUGH chair with elegant, bent veneer, curving the backrest outward into arm rests. BOUGH offers a superb seating comfort with its padded seat.

PRODUCT DETAILS

Designer: Jakob Amtorp

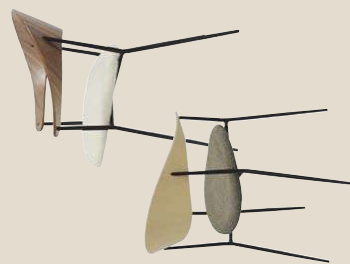
H: 80.5 cm

W: 56.7 cm

D: 55.5 cm

SH: 48.5 cm

Cbm/pcs: 0.133 m³



BOUND

Chair

The BOUND chair features an elegant skirted bottom. The skirt is a sophisticated continuation of the upholstery, beautifully enhancing the organic shapes of the seat.

Hidden wheels make the BOUND chair easy to move around.

PRODUCT DETAILS

Designer: Samme Profin

H: 81 cm

W: 50 cm

D: 61.5 cm

SH: 49 cm

Cbm/pcs: 0.238 m³



CRADLE

Chair

The CRADLE chair envelops you with its generous back and full seat that features pocket springs.

CRADLE's elegant conical legs rise gracefully along the front and back, adding a touch of sophistication to the design.

PRODUCT DETAILS

Designer: Jacob Amtorp

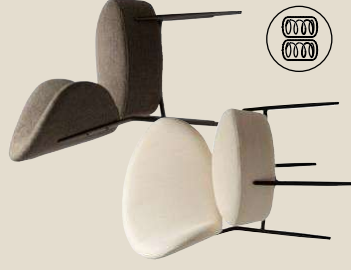
H: 80.5 cm

W: 52 cm

D: 58.5 cm

SH: 49.5 cm

Cbm/pcs: 0.144 m³



CROSS

Table

A classic table design with bold craftsmanship - the CROSS table does not go unnoticed.

It has an oval table top and wooden crossed legs with extravagant, crafted joints.

PRODUCT DETAILS

Designer: Santiago Sevillano

H: 75 cm

W: 110 cm

L: 220 cm

Cbm/pcs: 0.277 m³



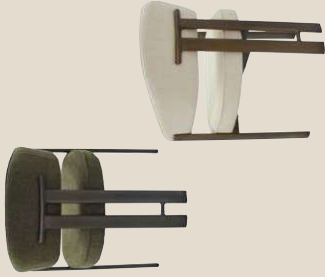
DUCT

Armchair

Modern and comfy, our DUCT armchair is a fusion of classic elegance and modern functionalism. The design is defined by the parallel back legs. The plush seat gives this chair extraordinary comfort.

PRODUCT DETAILS

Designer: Morten Georgsen
H: 80,5 cm
W: 60 cm
D: 55 cm
SH: 48,7 cm
Cbm/pcs: 0,183 m³



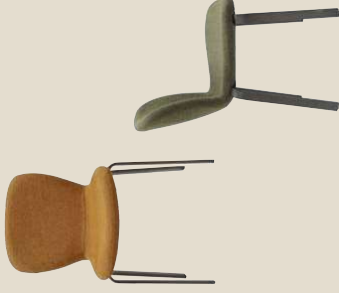
HEAP

Chair

The design of HEAP embodies midcentury principles. The seat features smooth, rounded corners, while the triangular metal legs add a sense of lightness and grace. Stackable up to 4 pieces.

PRODUCT DETAILS

Designer: Morten Georgsen
H: 82,5 cm
W: 50,5 cm
D: 60 cm
SH: 48,5 cm
Cbm/pcs: 0,164 m³



DUCT

Chair

A simpler version of the DUCT armchair, yet still defined by the two legs elegantly centered behind the backrest giving the design character. A plush seat gives extraordinary comfort.

PRODUCT DETAILS

Designer: Morten Georgsen
H: 80 cm
W: 54,5 cm
D: 55 cm
SH: 48,5 cm
Cbm/pcs: 0,156 m³



ROOT

Round coffee table

The sculptural ROOT coffee table draws inspiration from nature with its curved form.

The table is a decorative feature in any lounge or living room. It also comes as a dinner table and an oval coffee table.

PRODUCT DETAILS

Designer: Thomas Frederiksen
H: 42 cm
Ø: 60 cm
Cbm/pcs: 0,194 m³



EDGE

Table

EDGE lives up to its name; an edgy design with a touch of elegance.

The legs feature a stunning veneer detail, giving the table a light and airy expression.

PRODUCT DETAILS

Designer: Elvir Hodžig
H: 75 cm
W: 100 cm
L: 200-300 cm
Cbm/pcs: 0,576 m³



ROOT

Oval coffee table

Drawing inspiration directly from nature in the tree trunk-like veneered legs, combined with amazing craftsmanship to keep the table looking light, the ROOT table will be the centerpiece of any space. It also comes as a dinner table and a round coffee table.

PRODUCT DETAILS

Designer: Thomas Frederiksen
H: 42 cm
W: 65 cm
L: 130 cm
Cbm/pcs: 0,225 m³



SPLENDOR

Armchair

SPLENDOR is upholstered in luxurious fabric from top to bottom. This armchair is designed for comfort and everyday use. The seat features pocket springs, giving this chair an extraordinary seating comfort.

PRODUCT DETAILS

Designer: Says Who
H: 79.5 cm
W: 59 cm
D: 56 cm
SH: 49.5 cm
CbM/pcs: 0.214 m³



ZODIAC

Armchair

ZODIAC embodies a contemporary appearance, with a touch of class.

The outside of the arm rests are supported by the visible frame, giving it a remarkable design feature. The ZODIAC armchair offers a comfortable padded seat.

PRODUCT DETAILS

Designer: Dignio
H: 87.5 cm
W: 58.5 cm
D: 62.5 cm
SH: 47.5 cm
CbM/pcs: 0.186 m³



REBOOT

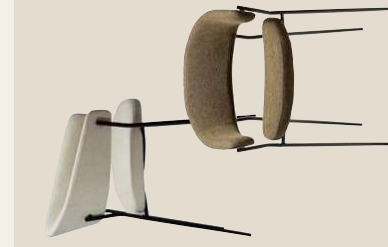
Armchair

A timeless classic, the REBOOT armchair represents the organic and simple design trend, that combines aesthetics and function.

Its slim, graceful legs support the back and armrests, giving the design a light look and feel.

PRODUCT DETAILS

Designer: Marleen Georgsen
H: 78.5 cm
W: 57 cm
D: 54.5 cm
SH: 46 cm
CbM/pcs: 0.143 m³



ZONE

Chair

ZONE provides a graceful and contemporary look. A characteristic drop in the back, combined with elegantly angled back legs creates a sense of refinement.

The ZONE chair beautifully blends simplicity with bold impact.

PRODUCT DETAILS

Designer: Says Who
H: 82 cm
W: 52.5 cm
D: 55 cm
SH: 49.5 cm
CbM/pcs: 0.097 m³



WOKE

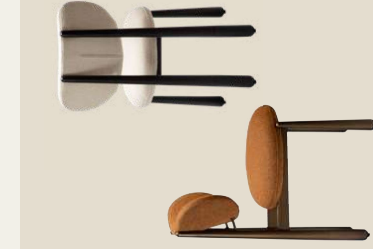
Chair

The WOKE design is a statement piece that dares to be different.

It presents a playful design with a softly padded seat and back, mounted on tapered baseball bat legs. WOKE is a creative choice that adds character to any room.

PRODUCT DETAILS

Designer: Says Who
H: 83 cm
W: 47 cm
D: 57.5 cm
SH: 50 cm
CbM/pcs: 0.135 m³



Special requests

All new designs can be customized with the type of upholstery or leg finish that is suitable for your market.

Bestsellers re-interpreted

Every year we extend the series of our most popular designs to give you more design choice and new features. This year we are excited to introduce these additions to our bestseller series:



BAE

Armchair w. swivel legs

This comfortable chair offers excellent seating comfort with pocket springs.

New swivel legs with auto-return marries form and function.

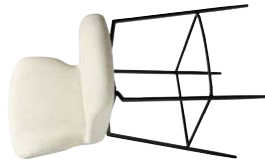


GLAM

Counter stool w. swivel legs

Designed by Sanne Prolin, the GLAM counter stool oozes elegance, created to fit into kitchen areas

New swivel legs with auto-return marries form and function.

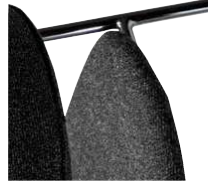


GLORY

Counter stool w. swivel legs

This popular chair has a fresh design and comfortable seat.

New swivel legs with auto-return marries form and function.



CHROME DETAILS

We re-introduce chrome on many of our popular designs this year. Choose chrome as a leg finish on specific designs, and give it a touch of sophistication.

We also introduce chrome on our PROTOPIA rack and EPIC table.

LET'S TALK

We value your interest in our products and are excited to provide you with more information regarding pricing, delivery times, and any other details you may require.

We are always happy to assist you to ensure that you have all the necessary information to make an informed decision when selecting our products.



MAX JØRGENSEN

+45 28 26 87 21
mj@dan-form.com



MERETE SØJHOLM

+45 28 69 64 17
msh@dan-form.com



STEFFEN GERMAN

+45 31 10 10 76
sg@dan-form.com



OLIVER SHÖNAUER

+43 664 4552747
os@dan-form.com



“Our designs are made with you in mind, created to enhance the way you feel and live.”

Sanne Prolin, Designer

DAN  FORM

Agiltevej 19
2970 Hørsholm
Denmark

+45 44 48 11 20
info@dan-form.dk
www.dan-form.com

NEW RELEASES 2025

